

Getting Started with Google Earth

Table of Contents

Navigating in the 3D Viewer	2
Creating Placemarks.....	3
Add Content to Placemarks	4
Creating Paths in Google Earth	5
Create a Start point.....	5
Create an End Point	5
Create the Path with Markers.....	5
Create a Tour from a Path.....	7
Create and Manage Folders for Places	8
Saving, Sharing, and Managing Places	9
Email a Place file	9
Save a Place File to a Location Other than the Places Layer.....	9
Open a Place File from a Location Other than the Places Layer	10
Delete a Place from the Places Layer	10
Resources	11

Krista White
GIS Support Specialist
X 3926

Kwhite2@drew.edu

Office HS 337

T, Th 8:00AM-12:00PM, 1:00PM-4:00PM

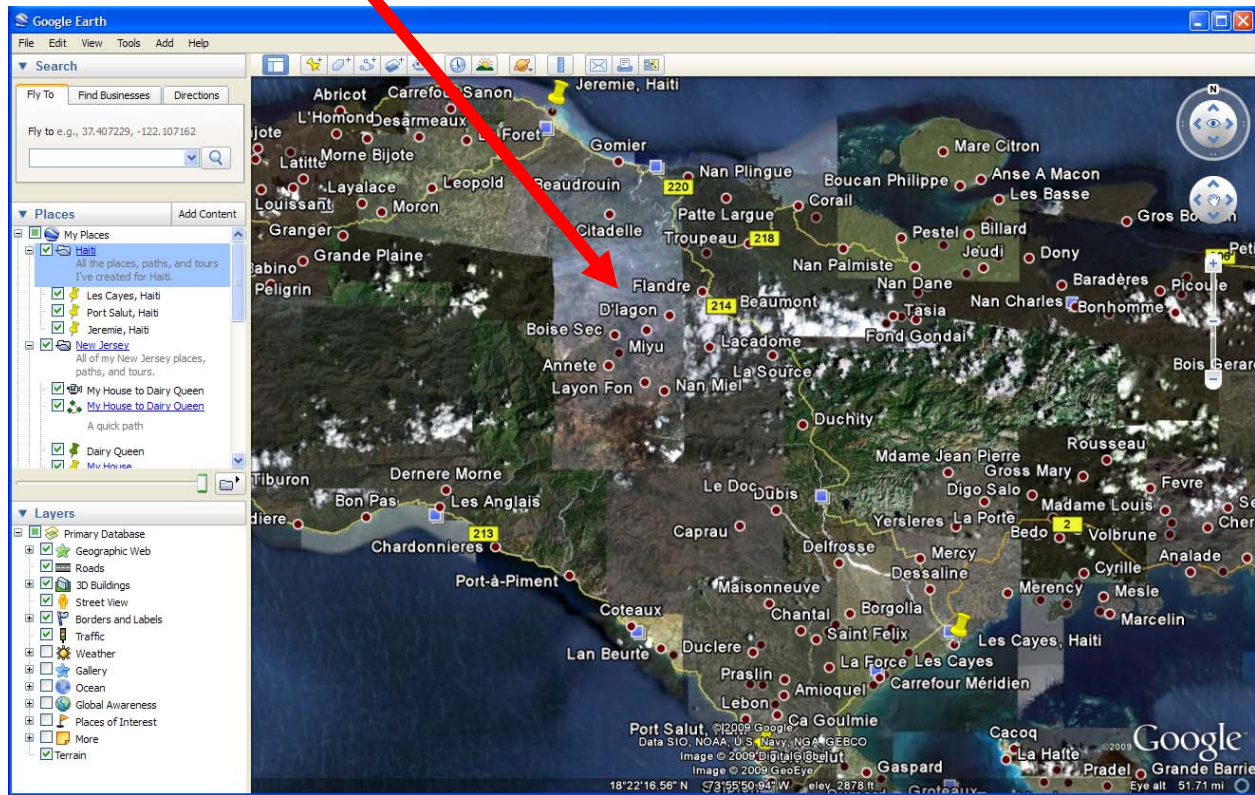
F 8:00-11:30AM

This tutorial will walk you through the basic skills needed to use **Google Earth**.

If you have difficulties with any of these materials, or wish to ask questions about them, please contact Krista White in Environmental Studies and Sustainability.

Navigating in the 3D Viewer

The **3D viewer** is the center section of the **Google Earth** screen that displays the map.

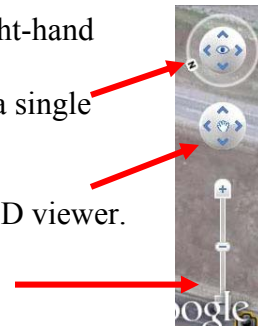


To navigate through the **3D Viewer**, use the navigation tools on the right-hand side of the screen.

The **Look joystick** lets you adjust the view in the **3D viewer** from a single vantage point as if you were turning your head.

The **Move joystick** lets you move from location to location in the 3D viewer.

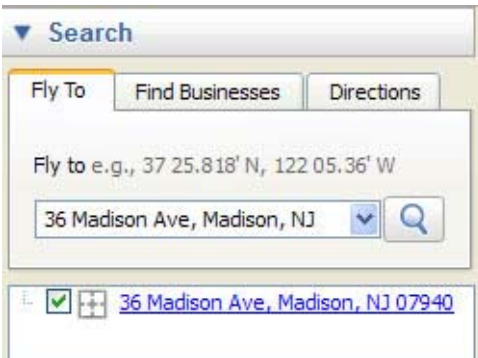
The **Zoom slider** lets you zoom in and out of the 3D viewer to get a closer or more remote view.¹



For more on **Navigation** in Google Earth, visit <http://earth.google.com/userguide/v4/#navigating>

Creating Placemarks

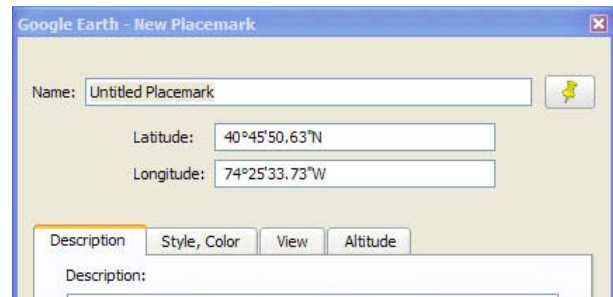
Placemarks allow you to insert an icon that marks a location in the **3D viewer** on **Google Earth**.



1. **Search** for the location you want to mark in the **Search** box at the upper, left-hand corner of the screen.
2. Use the **Zoom slider** to zoom in far enough to distinguish the place you want to mark from other, nearby locations.

3. Click on the **Add Placemark** icon  at the top of the Google Earth screen.

- a. A **New Placemark** dialog box will appear



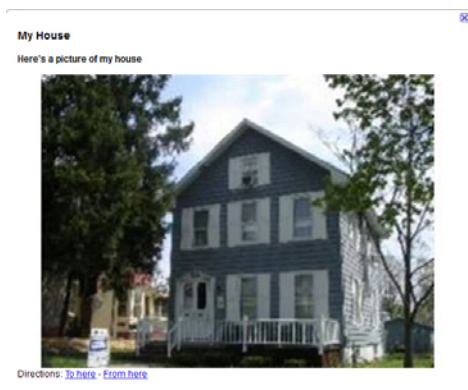
- b. A **Placemark** icon will also appear in the **3D viewer**.



4. Scroll over the **Placemark icon** with your cursor until the cursor becomes a pointing hand. Click and drag the **Placemark icon** to the location you want to mark in the **3D viewer**.
5. In the **New Placemark** dialog box, name the **Placemark**, and change its settings as desired using the tabs.

For more information about **Placemarks**, visit http://earth.google.com/userguide/v4/ug_placemarks.html

Add Content to Placemarks



You can add interactive content to a **Placemark** by using HTML code. The interactive content will show up when you click on the **Placemark** in the **3D Viewer** or when you click on the **Placemark** name in the **Places** layer.

1. Right-click on the name of the **Placemark** you want to enhance.
2. Choose **Properties**.
3. In the **Description** tab, place the following (or similar) HTML code:

```
<b>yoursubtitle</b>
<p>

<br>
<a href="http://for web site where you got the photo if it is not yours/">Photo
Source</a>
<p>
<b>Book:</b> <i>titleofbook</i></b>
<p>
<b>Author:</b><a href="http://of interesting web site about the
author/">authorname</a></b>
<p>
<b>Location:</b><b>Where the book takes place
<p>
<b>Time</b><b>Time period of bookii
```

Items in bold/red represent information you will have to fill in that is specific to the book or place represented by the **Placemark**.

*You should never take photos from a source unless you have explicit permission to do so.

4. Once you are finished filling in the proper content, click **OK**.
5. In order for the content enhanced **Placemark** to show up, you will need to close Google Earth and reopen it.
6. Click on the **Placemark** in **Google Earth**. The content you added should now appear in the pop-up box next to the **Placemark**.

For more on adding content to **Placemarks**, go to:

http://web.mac.com/jburg/GoogleLit/Lit_Trip_Tips_files/FormattingPlaceMarkers.pdf

Creating Paths in Google Earth

Paths are marked trails you can create to show movement from one place to another.

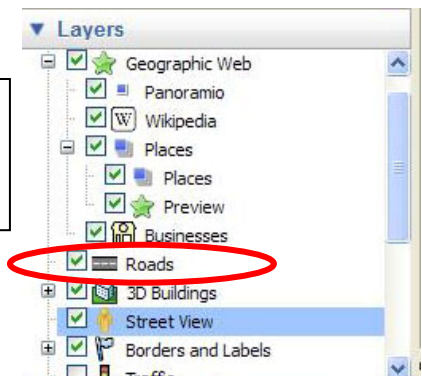
Create a Start point

1. **Search** for the place where you would like your Path to begin and add a **Placemark**, if desired, by using the **Add Placemark** tool.


Create an End Point

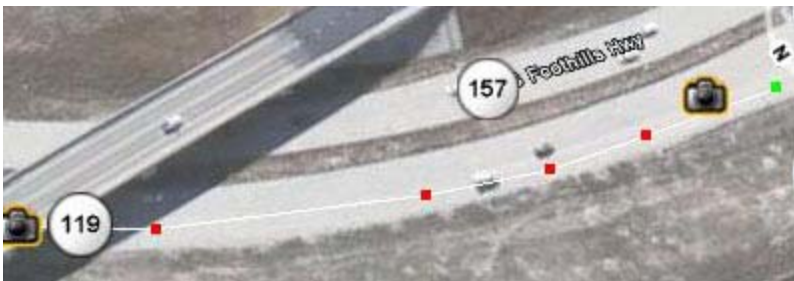
2. **Search** for the place that you want to end your **Path**. Mark it with a **Placemark**, if desired.

TIP: If you are creating an urban, street-level **Path**, you will want to zoom in so that you can see the names of places and streets you want included in your **Path**. If you are using streets to create your path, you will want to be sure to have the **Roads** layer checked in the **Layers** menu.



Create the Path with Markers

3. Click on the **Add Path** tool in the toolbar at the top of the screen.  The **Google Earth New Path** dialog box will open.
4. Name the **Path**, but *do not click OK*.
5. On the map screen, your cursor will become a square targeting **Sight**. When you click on the map with the **Sight**, a square **Marker** will appear.



Clicking on a new area creates a new square **Marker** connected to the first marker with a line. These connected **Markers** create a **Path**.

- a. Create a path by placing your first **Marker** at the **Start** point. The last Marker should be at the **End** point. It's important to create a **Path** from **Start** to **End** if you want to turn the **Path** into a **Tour** (see below).
- b. You can delete the last **Marker** you created by pressing the **Delete** key

- c. You can highlight an already existing marker by rolling over it until the **Sight** becomes a pointing hand icon. Click with the pointing hand on the **Marker** to highlight it.
 - i. You can delete **Markers** by highlighting them and pressing the **Delete** key.
 - ii. You can move **Markers** by highlighting, clicking, and dragging them.
6. Once you have created markers that extend from the **Start** location to the **End** location, click **OK** in the **Google Earth - New Path** dialog box.
7. Your **Path** will automatically be saved in the **Places** menu.
8. To **Delete** a **Path**, simply right-click on its title, and choose **Delete** from the pull-down menu. A dialog box will appear, asking if you are sure you want to delete the Tour. Click **OK**.

TIP: To create **Paths** that follow tight corners, as with sharp curves in a highway, zoom in and create a number of **Markers** close together to mimic the curve of the road (as above).

For more information on creating **Paths**, go to:
http://earth.google.com/userguide/v4/ug_drawing.html

Create a Tour from a Path

Tours are an easy way to get an animated, birds-eye view of a path you've created.

1. Highlighting the **Path** you want to make into a **Tour** in the **Places** menu.
2. Click on the **Path** button that appears at the bottom of the **Places** menu.

The **Tour** of your **Path** will start to play in the **3D Navigation** window, and the **Play Tour** menu will appear in the bottom, left-hand corner.

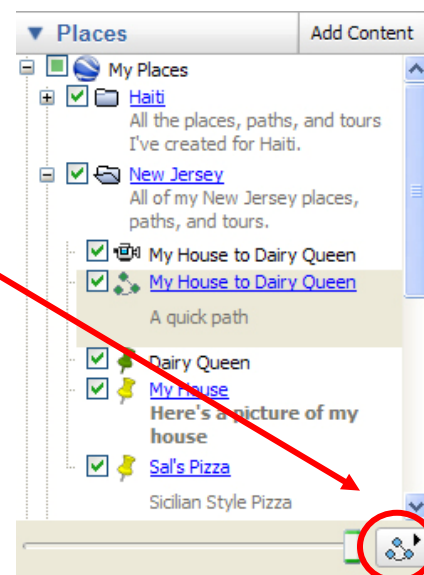
3. As the Tour begins to play, click on the **Save** button at the far right of the **Play Tour** menu.



4. Name the **Tour** and provide any additional information you like in the **Description** field.
5. The **Tour** will automatically be saved in your **Places** menu.

For more information on **Tours**, go to:

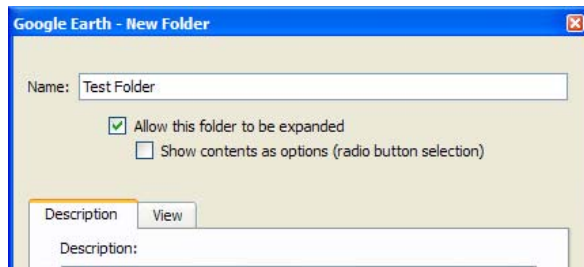
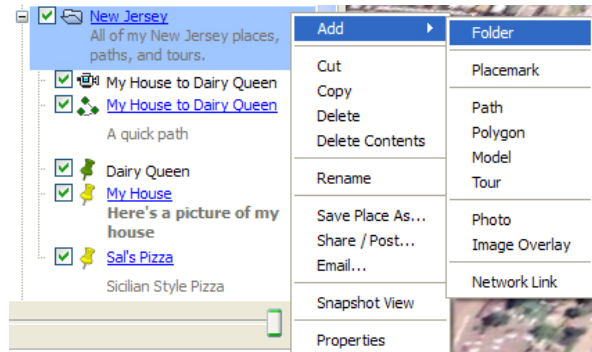
http://earth.google.com/userguide/v4/ug_touringplaces.html



Create and Manage Folders for Places

Folders can help organize multiple, short paths used to make up longer **Trips** and **Tours**.

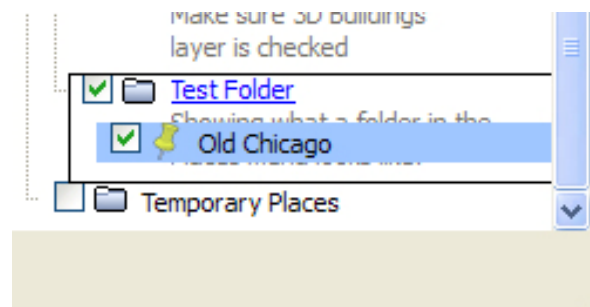
1. In the **Places** menu, right-click on any white area to reveal a pop-up menu.
2. Choose **Add**→**Folder**. The **New Folder** dialog box will display.
3. Name the **Folder** and give it a **Description**.



4. Choose **Allow this folder to be expanded** if you want to be able to see all the contents of a folder in the **Places** menu.

5. Click **OK**.

6. The **Folder** will appear in the **Places** layer.
7. Add items to the **Folder** by clicking and dragging them until the **Folder** is highlighted with a black outline:



8. Move or remove items by clicking and dragging them from the **Folder** to the desired location in the **Places** layer.

For more information about **Folders**, go to:

<https://earth.google.com/support/bin/static.py?page=guide.cs&guide=22364&topic=22368&answer=148149>

Saving, Sharing, and Managing Places

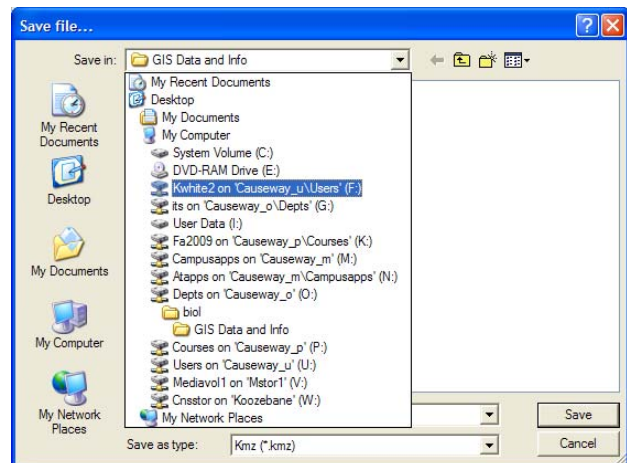
Email a Place file

1. Right-click on the name of the **Place** you want to send via email.
2. Choose **Email...**
3. A dialog box will appear, asking which email service you want to use to send the file. Choose **GroupWise/Use my default email program** (this option will appear if you are using your Drew computer).
 - a. If you already have **GroupWise** open on your desktop (not **WebMail**, but the installed **GroupWise** client), a new email message will appear with a **.KMZ** file attached. **.KMZ** is the file extension for **Google Earth** files.
 - b. If you do not have **GroupWise** opened, **Google Earth** will open **GroupWise** and display the email with a **.KMZ** file attached.
 - c. If you are not using your Drew computer, choose the appropriate email program displayed in the dialog box.
4. Type in the email address for those to whom you wish to send the **Google Earth/.KMZ** file.
5. Click **Send**.

Save a Place File to a Location Other than the Places Layer

If you create many **Places**, **Paths**, & **Tours** in **Google Earth**, having them all saved in the Places layer can eventually slow down your computer. You may want to save some files in another location, and open them in Google Earth only when you need them.

1. Right-click on the name of the **Place** you want to save to a new location.
2. Choose **Save Place As...**. The **Save Place** dialog box will appear.
3. In the **Save in** field, click on the black arrow to reveal a list of locations to which you can save the file.
4. Choose your **F:** or **K:** drive folders (if logged in on campus), or another location, such as a **USB flash drive**.
5. Choose the folder/location on the drive where you want to save the **Place** from **Google Earth**.
6. The **Place** file will be saved as a **.KMZ** file.



Open a Place File from a Location Other than the Places Layer

To open a place file someone has shared with you, you must first save it (see directions above).

1. In **Google Earth**, click on the **File** pull-down menu.
2. Choose **Open.....**
3. Navigate to the location where the **.KMZ** file is saved.
4. Double-click on the name of the file. The new **Place** file will open in **Google Earth** and save automatically to your **Places** layer.

Delete a Place from the Places Layer

1. Right-click on the name of the **Place** you want to **Delete**.
2. Choose Delete from the pop-up menu.
3. A dialog box will appear asking if you are sure you wish to delete the **Place**. Click **OK**.

For more information on managing **Place** files, go to:

http://earth.google.com/userguide/v4/ug_places.html

ⁱ Adapted from “Google Earth User Guide: Navigating,” 2009, accessed September 22, 2009 from <http://earth.google.com/userguide/v4/#navigating>.

ⁱⁱ Adapted from Burg, J., “Google Lit Trips: Formatting Placemark Pop-up Descriptions.” 2009, accessed September 24, 2009 from http://web.mac.com/jburg/GoogleLit/Lit_Trip_Tips_files/FormattingPlaceMarkers.pdf

Resources

- Burg, J. (2009, September 24). *Formatting Placemark Pop-up Descriptions*. Retrieved September 29, 2009, from Google Lit Trips:
http://web.mac.com/jburg/GoogleLit/Lit_Trip_Tips_files/FormattingPlaceMarkers.pdf
- Google, Inc. (2009). *Drawing Paths and Polygons*. Retrieved September 22, 2009, from Google Earth User Guide: http://earth.google.com/userguide/v4/ug_drawing.html
- Google, Inc. (2009). *Marking Places*. Retrieved September 22, 2009, from Google Earth User Guide: http://earth.google.com/userguide/v4/ug_placemarks.html
- Google, Inc. (2009). *Marking, Saving, and Sharing Places*. Retrieved September 23, 2009, from Google Earth User Guide:
<https://earth.google.com/support/bin/static.py?page=guide.cs&guide=22364&topic=22368&answer=148149>
- Google, Inc. (2009). *Navigating*. Retrieved September 22, 2009, from Google Earth User Guide: <http://earth.google.com/userguide/v4/#navigating>
- Google, Inc. (2009). *Touring Places*. Retrieved September 22, 2009, from Google Earth User Guide: http://earth.google.com/userguide/v4/ug_touringplaces.html
- Google, Inc. (2009). *Using Places*. Retrieved September 25, 2009, from Google Earth User Guide: http://earth.google.com/userguide/v4/ug_places.html