

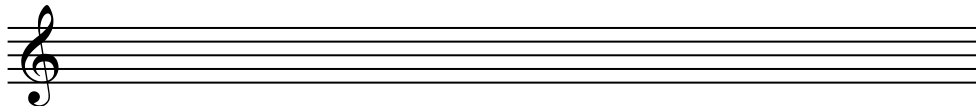
# Music Theory Diagnostic Test

NAME:

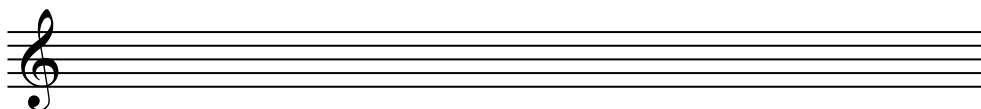
Send the completed test to: Dr. Trevor Weston  
Drew University  
36 Madison Ave.  
Madison, NJ 07940

or email a completed scanned  
test to [tweston@drew.edu](mailto:tweston@drew.edu)  
or bring the completed test to  
Dr. Weston in the Department of Music

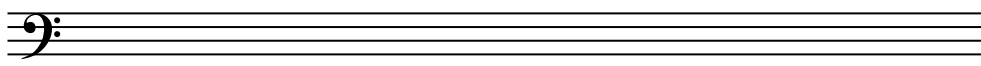
1. Write an **E** Major scale.



2. Write a **g** minor scale.



3. Write a **b** harmonic minor scale.

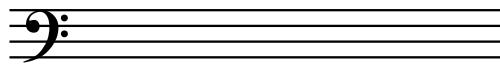


4. Create the Major key signatures indicated.

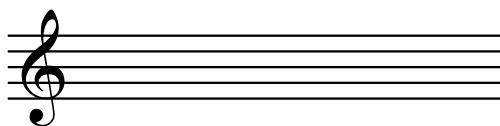
B $\flat$  Major



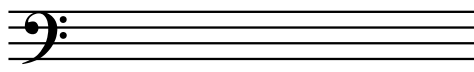
A Major



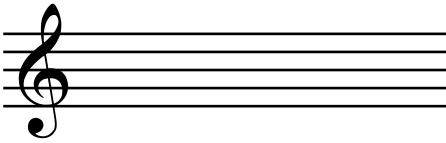
G $\flat$  Major

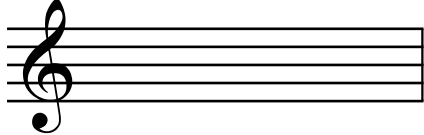


B Major

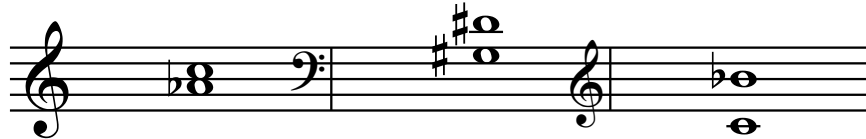


5. Create the minor key signatures indicated.

c minor 


e minor 

6. Identify the intervals below.



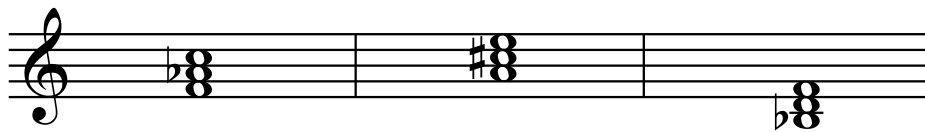
\_\_\_\_\_

7. Add the correct note above the given pitch to create the interval indicated.



Perfect 4th                  Major 6th

8. Identify these triads.



\_\_\_\_\_

9. Create the triads indicated above the given notes.



d minor                  E major                  C $\flat$  Major

