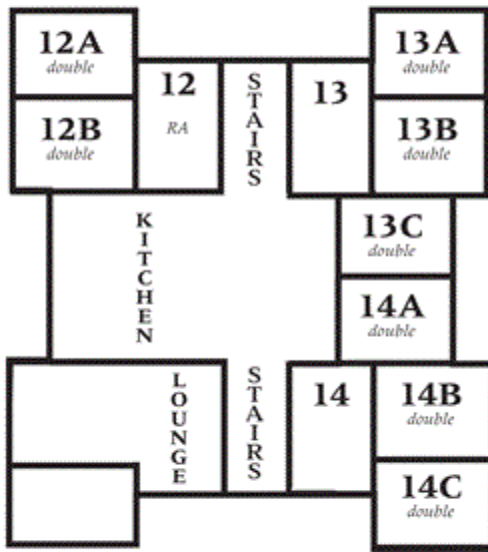


Foster Hall Facts:

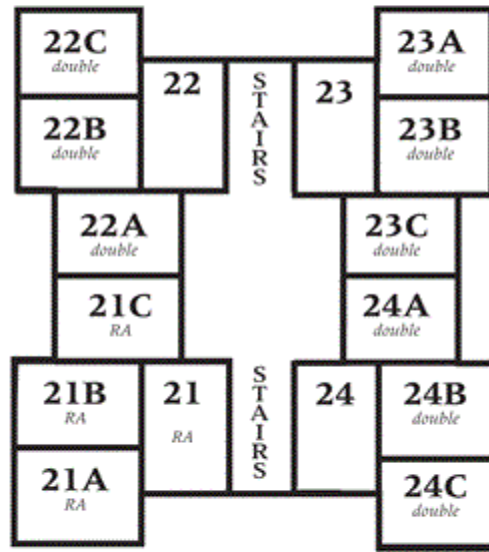
Description	Capacity	Room Type	Room Size	Window Size
Suite Style Building Co-Ed by Suite	59 Residents	29 Doubles 2 Single 1 Apartment	11'6"x13' (<i>Approximate</i>)	56" wide 80" high

FOSTER HALL

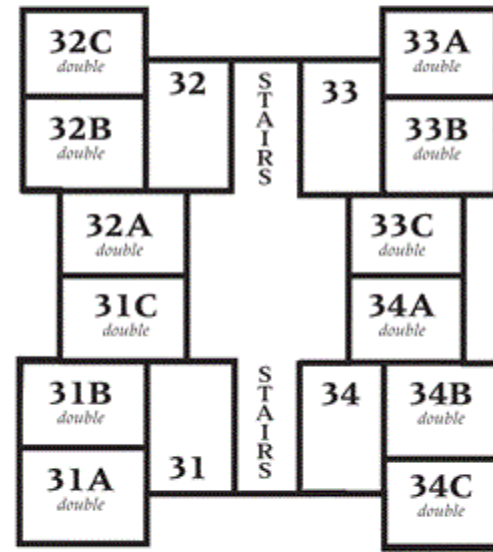
Each unit must be filled completely at room selection.



First Floor



Second Floor



Third Floor

← McClintock

FRONT
(Circle)

Hurst →